

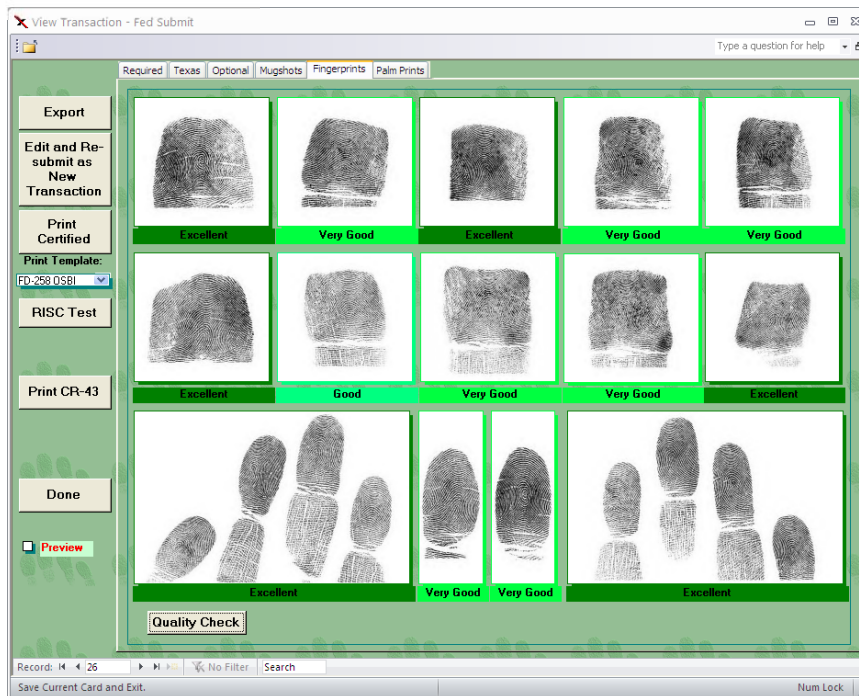
Fed Submit™ (OPM)

Overview

Mentalix's Fed Submit (OPM) product is used by contractors and government agencies that are mandated or permitted to submit background checks to OPM. Electronic fingerprint capture (and submission, where permitted) can result in significant time and cost savings for agencies that previously mailed ten-print inked cards for identity verification. Fed Submit's adaptability, scalability and affordability make it work for organizations of any size.

Benefits

- Eliminates the mess of ink capture and reduces errors.
- Increases speed of capture and submission process.
- Low cost makes it affordable for even small-volume needs or for placing units at multiple sites.
- Streamlines transaction administration, featuring fingerprint acquisition, submission and tracking.
- Can be expanded or scaled down to accommodate a single-site operation or a multi-office organization.
- Works with off-the-shelf hardware rather than costly special equipment.
- Straightforward – does not require extensive training.
- Designed for background checks, software includes standard NIST fields – no specialization is needed.



Fed Submit (OPM) allows you to capture fingerprints with a live scanner and/or to convert inked cards to electronic format. The software performs image quality and sequence checks on the fingerprint images prior to printing or submitting transactions – greatly reducing errors and processing time.

Features

- FBI-certified live scan & card scan support
- Fingerprint capture software
- 500 ppi FBI certification
- FBI-certified WSQ Version 3.1 compression
- FBI-certified card printing on blank card stock with add-on
- EBTS formatting
- Fingerprint quality check
- Fingerprint sequence checks (with live scan)
- Stores 70,000+ transactions
- Transaction reports
- Full text search capability
- Supports submission of transactions via SMTP using customer-supplied dial-up connection
- Customized data entry & field checks specific to applicant card requirements
- Electronic submissions accepted by OPM
- Context-specific field image display during data entry (with card scan)
- Live scan and card scan systems available

Flexibility

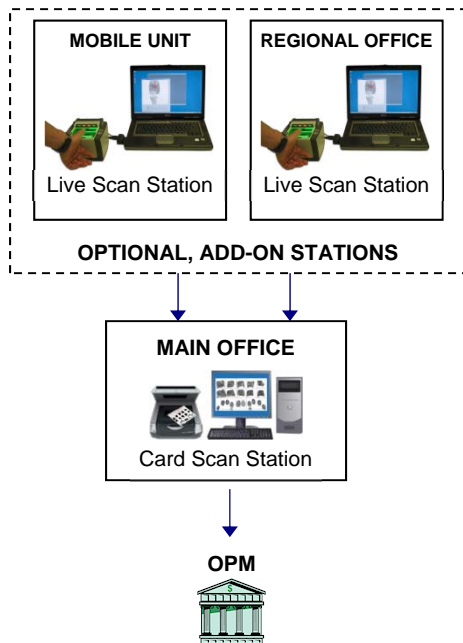
Fed Submit (OPM) can be configured to meet the needs of both large and small organizations. With options for add-ons and multiple stations, Fed Submit (OPM) can also accommodate a variety of needs, from card scanning to live scanning to electronic submissions.

Example 1: Replace Ink Process



Fed Submit (OPM)
live scan station with printer

Example 2: Multi-Branch Company



Fed Submit Specifications

Minimum Requirements

- | | |
|-----------------|--|
| Computer | <ul style="list-style-type: none"> • Mid-range Intel (Core i3/i5 2.1 GHz or higher, Core 2 Duo E7500 or higher, etc.) or similar AMD processor, 1+ GB memory • PCI-Express video card with 256 MB or more video RAM, capable of 1024 x 768 resolution • For desktop PC: 20-inch or larger LCD flat-panel display. Monitor must be XGA (Extended Graphics Array) capable or better. • For notebook: 15-inch or larger LCD flat-panel display with XGA or better capability • Microsoft SQL Server 2008 R2 Express • Microsoft Windows 7 or similar • Adobe Acrobat Reader XI+ • For remote support: Installed LogMeIn client • UPS power backup system (not needed for notebook) |
|-----------------|--|

- | | |
|---------------------|--|
| Connectivity | <ul style="list-style-type: none"> • VPN Internet connection (if submitting transactions) • For USB live scanners: USB port and cable • For card scan: USB 2.0 port and cable |
|---------------------|--|

- | | |
|------------------|--|
| Live Scan | Supported live scanner: <ul style="list-style-type: none"> • Fed Submit L SCAN Guardian (ten-print capture) |
|------------------|--|

- | | |
|------------------|---|
| Card Scan | Supported flatbed card scanner (connects via USB): <ul style="list-style-type: none"> • Epson Perfection 4990 or V700 (PHOTO or PRO) |
|------------------|---|

- | | |
|----------------------|--|
| Card Printing | Supported printer with USB 2.0 (local) or TCP/IP LAN (network): <ul style="list-style-type: none"> • Lexmark C544n (color) • Lexmark T650n (black & white) |
|----------------------|--|

Maintenance & Installation Services

- | | |
|-----------------------------|---|
| Software Maintenance | Phone/e-mail/remote support (weekdays 8am-5pm Central Time, excluding holidays) for Fed Submit software, plus maintenance releases (corrections & updates). |
|-----------------------------|---|

- | | |
|----------------------------------|--|
| 24x7 Support Registration | Access to 24x7 per-incident support per site. Per-incident pricing is \$100/first 15 minutes + \$50/each additional 15-minute increment and only applies to after-hours support. |
|----------------------------------|--|

- | | |
|------------------------------|--|
| Live Scan Maintenance | Depot repair/replacement of live scanner for problems that arise during normal, wear-and-tear use. |
|------------------------------|--|

- | | |
|------------------------------------|---|
| Installation & Training | On-site system setup and training by Mentalix |
|------------------------------------|---|

Contracts

- | | |
|------------------------|-----------------------------|
| GSA Schedule 84 | MAS Contract # GS-07F-0014V |
|------------------------|-----------------------------|