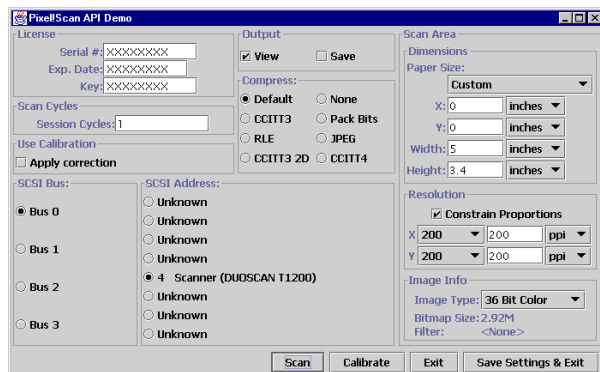


Pixel!SCAN API Toolkit™



The Pixel!SCAN API Toolkit includes both 'C' sample programs and a GUI demo (above). These simplify integration and can be used to build a custom scanning interface that meets the needs of your customers.

Mentalix's **Pixel!SCAN API Toolkit** addresses the general-purpose scanning needs of system integrators and custom solution providers. Target Toolkit users are software developers interested in integrating an off-the-shelf solution into their end-user systems. With its broad device/platform support and full-featured scanning functionality, the Pixel!SCAN API Toolkit provides a single solution for all scanning needs across integrators' product lines.

Painless integration process

The Pixel!SCAN API Toolkit features multiple components designed to make the integration process as smooth as possible. The API is available in a platform-specific library module -- a DLL for Windows and a shared object library for UNIX. On Windows platforms, the DLL is easily usable in C, Visual Basic and .NET development environments. Each library module has a 'C' interface that can be used to carry out scanning functions. You can easily integrate a consistent scanning interface within larger turnkey systems -- including several UNIX platforms, Windows and multi-platform environments. In addition, since our software supports off-the-shelf scanner models, you have the freedom to choose the platforms AND scanners that suit your needs.

Designed to maximize productivity

The Toolkit facilitates rapid integration of a reliable, full-featured scanning interface. You may choose from several time-saving functions that will appeal to your product's end users. You can take advantage of the software's scan-to-file capability, which enables the user to scan images directly to TIFF files. This feature provides an efficient, fast way to acquire even very large

images without having to process raw data from each scanned image. If the scanner model supports an Automatic Document Feeder, a multi-page document can be scanned and saved as a single TIFF file. Queries that determine device-specific optical resolution, scan bed area and resolution ranges allow you to get the most out of your scanner's features.

Basic scanning tools ... and more

With the Pixel!SCAN API Toolkit, you can create an easy-to-use interface that produces quality scans with little effort from the end user. The Toolkit allows you to add features that far surpass the limited functionality typically found in commercial off-the-shelf scanning software. The one-step color calibration process generates a correction for the scanner, using either the supplied Mentalix calibration target or one of the supported standard targets. Your scanner-specific color adjustment profile can be saved and reused with each subsequent scan.

Integrators may also select from a rich array of API functions for adding image quality controls to the end-user interface. For example, the software offers extensive color/gray level controls for fine-tuning an image. Utilize the color controls to adjust white point, black point and mid point as well as brightness, contrast and gamma. Your custom LUTs are also supported. Furthermore, convolution filters can be applied to images.

Complementary products

Maintenance & Support: A maintenance contract entitles the holder to unlimited technical support and automatic maintenance releases for the duration of the contract. Maintenance releases (designated by the minor identifier to the right of version number decimal point) consist of minor feature enhancements and scanner/platform support updates. The next level, a product subscription, includes all the benefits of a maintenance contract plus major upgrades. Major upgrades may include significant feature additions. Our engineering team also provides consulting services to help you meet more specialized requirements.

Pixel!FX® Product Family: As an alternative, systems integrators who provide off-the-shelf software to their customers may offer Mentalix's UNIX-based Pixel!FX imaging and scanning products for end users. The product line includes applications for scanning, OCR, image editing, storage/retrieval, printing, and file format conversion.

Fingerprint API Products: Mentalix provides several products for integrators who offer solutions to the law enforcement and security industries. The Pixel!SCAN API Toolkit can be integrated with these solutions to include, for example, mug shot images.

Feature Summary

Highlights for Developers:

- One-piece DLL or shared object library module designed for ease of deployment and quick updates
- Supports Windows and several UNIX platforms, as well as multi-platform systems - A single solution for all your product scanning needs
- Uniform interface across platforms
- Straightforward installation script is easily integrated into your product solution
- "Drop in" upgrades allow you to leverage scanning technology advances quickly
- Includes core scanning functionality found in Mentalix's established end-user application, Pixel!SCAN®
- Sample 'C' programs for ease of use
- Interactive GUI demonstration program with image scanning, viewing and file export capabilities
- Enables image acquisition with off-the-shelf scanning devices
- Add-on limited Pixel!ENGINE™ compatibility module enables a smooth migration path for Pixel!ENGINE users

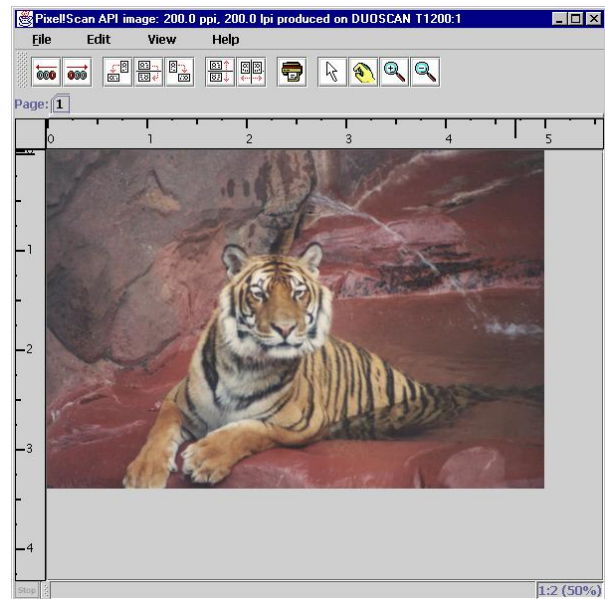
API Scanning Functionality:

- Supports SCSI scanners from Agfa, Hewlett-Packard, Microtek, and UMAX
- True 30-bit+ RGB color scanning support available on certain scanner models
- Scan directly to TIFF file or into memory
- Define compression method - CCITT group 3, CCITT group 4, run length encoding, packed bits, and JPEG
- Selectable scanning resolution
- Query functions for determining scanner-specific full optical resolution, resolution ranges and scan bed area
- Scan with independent x/y resolution when supported by scanner
- Select image type, from line art up to 16-bit grayscale and 48-bit RGB color
- Color calibration - Automated calibration process using a Mentalix-supplied calibration target or a choice of supported standard calibration targets
- Extensive color adjustment controls:
 - White/Black/Mid point
 - Brightness
 - Contrast
 - Gamma
 - RGB settings - Adjust RGB composite or each channel
- Supports custom LUTs
- Line art adjustments - User can change threshold settings for scanning line art

- Apply convolution filters, including Unsharp mask, Descreen or user-defined filters, while scanning
- Automatic document feeder support for selected scanners, including ability to scan multiple pages and save as a single TIFF file
- Transparency adapter support for selected scanners
- Close and Release feature disconnects the scanner so that it can be used by another user

Demo Features:

- Displays a GUI with controls for:
 - Scanner selection
 - Calibration
 - Image compression
 - Paper size - Accommodates custom sizes
 - Measurement preferences for scan area dimensions - Options include inch, centimeter, pica, and point units
 - Resolution
 - Save and reload scan settings for future use
- When viewing scanned image, options include:
 - Zoom in/out
 - Flip
 - Rotate
 - Print
 - Export



You may choose between scanning directly to a TIFF file or viewing the image in a separate window to perform basic editing. From the view window (above), you can zoom in or zoom out, flip, rotate, print or export your image before saving it.

Pixel!SCAN API Toolkit Scanner/Platform Support

SCANNER	INTERFACE	Windows 2000/XP	SUN Solaris 8 or later	HP-UX 11	IBM AIX 4.3.2	Suse Linux	Software Supports Transparency Adapter*	Software Supports ADF*
Agfa DuoScan T1200	SCSI	X	X	X	X	X	X	
Epson Expression 1600	SCSI	X	X	X	X	X		
Epson Expression 1640XL	SCSI	X	X	X	X	X		X
Epson Expression 1680	SCSI	X	X	X	X	X	X	
Epson Expression 10000XL	USB 2.0	X						X
Epson Perfection 1640SU	SCSI	X	X	X	X	X	X	
Epson Perfection 4870	USB 2.0	X						
HP Scanjet 6100C	SCSI	X	X	X	X	X	X	X
HP Scanjet 6200C	SCSI	X	X	X	X	X	X	X
HP Scanjet 6250C	SCSI	X	X	X	X	X	X	X
Microtek ScanMaker 4	SCSI	X	X	X	X	X	X	X
Microtek ScanMaker 5	SCSI	X	X	X	X	X	X	X
Microtek ScanMaker 6400XL	SCSI	X	X	X	X	X	X	
Microtek ScanMaker 9600XL	SCSI	X	X	X	X	X	X	
UMAX Mirage II	SCSI	X	X	X	X	X	X	
UMAX PowerLook III	SCSI	X	X	X	X	X	X	
UMAX PowerLook 2100XL	SCSI	X	X	X	X	X	X	

* For scanner models that have Automatic Document Feeders (ADF) and/or transparency adapters, some manufacturers include these with the scanner, while others may offer them as optional add-on purchases. Chart indicates which of these two features (if available for the scanner model) are compatible with Mentalix software.

New scanners and platforms are added regularly; please check the Mentalix Web site at <http://www.mentalix.com> for the latest updates.